

# L&M&J



**PREFABRICATED AND INDUSTRIAL HALLS**  
MODERN SOLUTIONS FOR YOUR STORAGE SPACE AND WORKPLACE



## Company L&M&J LTD

The first Serbian company with many years of experience in the work with professional halls that are commonly used in industry. After decades of work in the field of renting halls for various purposes, the Company L&M&J LTD has started not only the production but also the sale of industrial halls in accordance with the necessary size of space and requirements of customers. The Company operates all over the country and in the region, and it is recognised by customers as a reliable partner in solving problems with storage space, as well as with the design of the expansion of their storage or work facilities.



Certificate Number 20953-Q15-001  
ISO 9001:2015  
SRPS ISO 9001:2015

# How to find an ideal solution for your storage/industrial space?

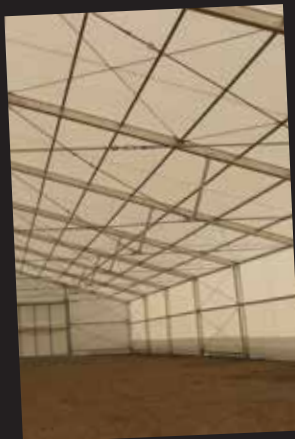
Before you contact us for a request for proposal,  
please think about the following:

- Necessary dimensions of the hall ( width x length x height )
- Dimensions of the area that is available to you for building the hall
- Type of surface on which you plan to build the hall - soil, grass, concrete/asphalt, etc.
- Purpose for which you need the hall
- How quickly you need the hall
- Whether you want to buy or rent the hall

On the basis of your information and the request for proposal, our team of experts will contact you with additional questions and offer their professional consultations and to visit the site in order to define your requirements correctly.

After jointly defined requirements, we will prepare our offer and, after its acceptance by the customer's authorised person, we will transfer this offer into the hall, which will be assembled within the agreed period of time.

# THE WORLD WORKS TOGETHER.



# JOIN US TO FIND THE WAY.

# Prefabricated and industrial halls:



- 1 /** Industrial halls are made of four-channel aluminium profiles and galvanised steel fasteners that make a solid and resistant base of the facility.
- 2 /** The technology for the production of halls that is based on aluminium profiles enables durability and high resistance of the structure to atmospheric influences, as well as its adaptation to the required construction and static parameters, such as snow load capacity and resistance to wind loads.





**3 /** The span of the hall width varies from 10 to 30 m, the height varies from 3 to 8 m, while the length of the hall is defined at every 5 m, which is the span between supporting columns/segments.



**4 /** Standard bearing capacity of the roof structure (snow load) is 85 - 100 kg/m<sup>2</sup>, while the resistance to wind loads is up to 150 – 180 km/h.



**5 /** If the customers' requirements do not fit into standard specifications, we prepare individual designs and calculations of stability are made in relation to their requirements.



- 6 /** Depending on requirements and the purpose, the hall can be covered with tarpaulin, panels, or trapezoidal sheet metal.
- 7 /** In addition, there is a possibility of installing an anti-condensation system in the form of industrial fans or anti-condensation cloth.



**8** / Standard entrance door is a sliding door made of steel structure and covered with tarpaulin. At the customer's request, roller doors, evacuation doors, and other types of doors and entrances can also be installed.



**9** / The system of aluminium profiles is characterised by high resistance, as well as by easy and quick assembly without the use of heavy machinery.



**10 /** Additional advantage of the above-mentioned system is reflected in easy adaptation to the customer's requirements and conditions of necessary capacity and dimensions of the hall.

**11 /** The roof is gabled and its ridge is at an angle of  $18^\circ$ , which prevents the retention of storm water at the roof surface.



- 12 /** The base on which the industrial hall is mounted has to be hard and ideally flat.  
In relation to the type of a substratum, fixing is done by means of 30 x 1000 mm wedges.
- 13 /** It is also connected to the base in order to prevent the penetration of water  
and of other external influences into the interior of the hall.

## Why using prefabricated halls as a storage area?



As a rule, aluminium prefabricated and industrial halls are temporary facilities that have multiple purposes.



Light weight is the biggest advantage, and therefore installation is fast and transportation costs are lower.



Easy division into several elements and better use of space is yet another benefit of our industrial halls.



Since these are temporary and prefabricated facilities, there is no obligation for long and demanding administrative procedures and obtaining building permits.



The possibility of moving prefabricated halls from one location to another enables flexibility of operations and huge savings for various activities.



For prefabricated halls it is not necessary to construct the foundation and supports for columns, so it is possible to place them on different types of substrata.



Building Permit is not necessary.  
Fast installation.  
Quick and easy moving.  
Divisible into multiple units.

## Examples of usage:



Storage of repro materials



Automotive industry



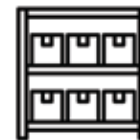
Storage of finished goods



Agriculture



Storage of special purpose goods



Rack storage

# RENT or PURCHASE

the industrial hall - the choice is yours!

- Production and sale are done for a minimum area of 300 m<sup>2</sup>
- After a certain rental period, it is possible to purchase the industrial hall

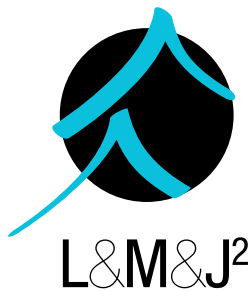












**L&M&J D.O.O.** , MIŠELUK III / 10, SREMSKA KAMENICA / +381638021902 / +381658021902  
LMJ2DOO@GMAIL.COM / OFFICE@SKLADISTA-HALE.RS / WWW.LMJ-SATORI.RS / WWW.SKLADISTA-HALE.RS